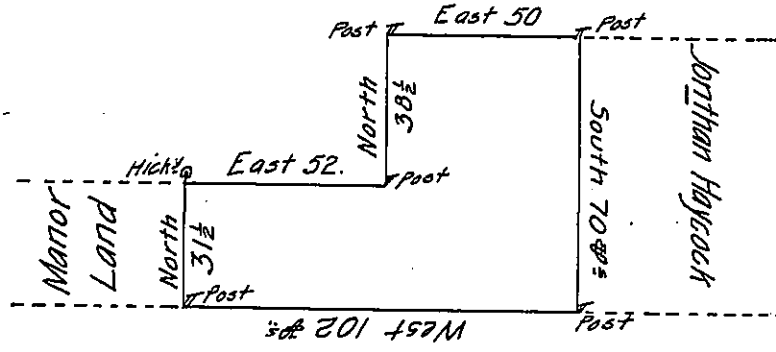


Edward Philips



John Malsbury

By Virtue of an Order from M^r William Peters Secretary dated the
 the 12th day of Jan^y 1762
 6th day of January 1762 I have Surveyed to John Malsbury the above Described
 Tract of Land Situate in Richland Manor Containing Thirty Acres and forty
 seven perches and the Allowance of Six $\text{\textcircled{P}}$ Cent

Correct J.L.S.G. $\text{\textcircled{P}}$ John Scull

IN TESTIMONY that the above is a copy of the original remaining on file in
 the Department of Internal Affairs of Pennsylvania, made
 conformably to an Act of Assembly approved the 16th day of
 February, 1833, I have hereunto set my Hand and caused
 the Seal of said Department to be affixed at Harrisburg,
 this twenty first day of November 1905.

George D. Brown
 Secretary of Internal Affairs.